

# NUANCE

The experience speaks for itself™

## DATASHEET

### eCopy Connector for Open Text Livelink ECM™

#### Integrate paper documents into a digital content management system

Using the eCopy Connector for Open Text Livelink ECM, paper documents can be scanned at a digital copier or document scanner and sent to Livelink Enterprise Server repositories for storage and ongoing document lifecycle management. The Connector is dynamically integrated with Livelink ECM, assuring customers that eCopy-created image files will be indexed, stored, and managed consistent with their existing content management procedures.

The eCopy Connector for Open Text Livelink ECM enables eCopy ShareScan® users to scan documents directly into Livelink ECM to ensure business content from across the enterprise is protected and kept in check with established internal policies as well as industry and regulatory compliance mandates.

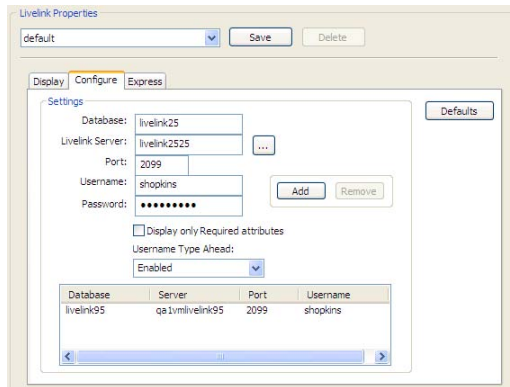
With the eCopy Connector for Open Text Livelink ECM, hard copy documents are quickly converted into digital files to be stored in Livelink ECM's highly scalable document repository. Document information (such as type and format) and any Livelink ECM specific attributes are input at the digital copier or scanner using eCopy ShareScan. Documents can be sent directly to the specified location within Livelink ECM for storage where it is immediately available for retrieval by authorized Livelink ECM users.

#### FEATURES AND BENEFITS

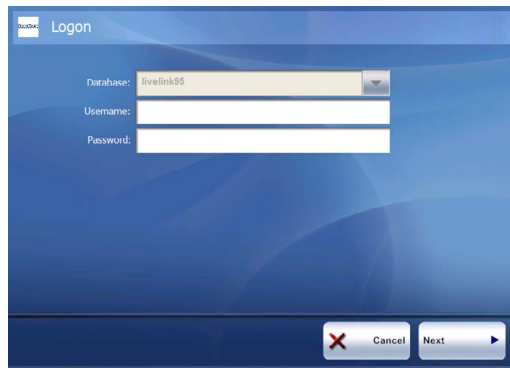
- Leverage existing Open Text Livelink ECM investment
- Validate users at the device
  - Create an electronic audit trail
  - Conform to corporate security policies: *Sarbanes Oxley, HIPAA*
- Integrate dynamically with Livelink ECM
  - Enable unique user permissions and preferences
  - Consistent user interface and workflow reduces training time
- Lower total cost of ownership
  - Server modifications automatically reflected at each device in real time
- Capture missing information
  - Add paper documents to your Livelink ECM Document Management Process
- Profile documents completely from an eCopy-enabled device with minimal typing
- Improve workgroup collaboration
  - Easily retrieve electronic and paper documents from Open Text Livelink ECM

The screenshot shows a software interface titled 'Categories:'. It contains several input fields with labels and dropdown menus. The fields are: Document Name (with a small 'a' icon), Date (with a small 'a' icon), Product Code (with a small 'a' icon), Doc Name (with a small 'a' icon), User Name (with a small 'a' icon and a dropdown arrow), and Security (with a small 'a' icon and a dropdown arrow). The values entered are: Document Name: SHOPKINS01\_LIVELINK\_11102006-120148, Date: 11/10/2006, Product Code: 4545, Doc Name: eCopy Connectors, User Name: shopkins, and Security: True. At the bottom right, it says '1 of 2'. At the bottom, there are three buttons: 'Back', 'Cancel', and 'Next'.

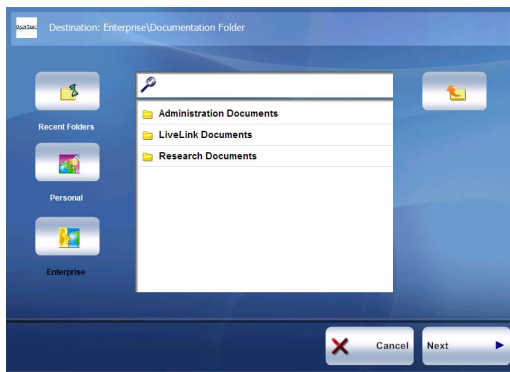
*Add required document indexing information at the copier just as you would back at your desktop.*



Initial installation and setup take only minutes to complete. Simply identify the Livelink Enterprise Server, and choose what you want users to see at the copier or scanner.



Users are authenticated by entering their username and password while at the eCopy-enabled device, ensuring that no one distributes or stores scanned documents from a different user account.



The user views a unique interface based on their login information, displaying their workspaces, projects, folders, and short cuts.

#### DEVICE COMPATIBILITY

For the latest supported e-mail servers, document management systems, network fax servers, and cost recovery systems, please visit:  
<http://connectors.ecopy.com/Software-Alliance-Partners>

For the latest supported platforms for eCopy ShareScan, please visit:  
<http://www.ecopy.com/support/platforms.htm>

#### System Requirements

- eCopy ShareScan® v4.2 or higher
- Open Text Livelink Enterprise Server v9.1 or higher

© Copyright 1995-2009 Nuance Communications, Inc. All rights reserved. This program is protected by US and International copyright laws as described in the Help About. All other terms and products are trademarks or registered trademarks of their respective owners and are hereby acknowledged.